

# Crash & Crime



## Forensic Mapping Solutions

### 3D Laser Scanners – FARO

#### Total Stations:

**Topcon & Sokkia**  
(Reflectorless & Robotic)

#### GPS Mapping

#### Data Collectors:

**Topcon Tesla, ARCHER2, Allegro2 and more.**

#### Crimezone 2D/3D CAD

#### Crashzone 2D/3D CAD

#### Firezone 2D/3D CAD

#### CZ Point Cloud

#### Pocketzone

#### Field Mapping Equipment

#### LTI Mapping Systems

#### LTI Laser Speed Devices

#### Other Mapping Supplies

#### Training

With our industry partners we can provide the Forensic Mapping solution: Sales, Training, and Support



#### FARO X330 and X130 3D Laser Scanners

Easy to use  
Light weight  
Over 976,000 points per second  
Less than 5 minutes to complete single scan\*  
Scans 1000ft (X330 model)  
*\*Dependent on Settings*



#### FARO Scanner Freestyle<sup>3D</sup>

The new FARO Scanner Freestyle<sup>3D</sup>, a handheld scanner for professionals



FARO X330 Model: Package starting at \$59,990.

FARO X130 Model: Package starting at \$49,990.

FARO Freestyle Handheld 3D Laser Scanner: \$13,450.00 (Also includes Tablet & Software)

Contact us for more details on current pricing and system packaging.

Providing a comprehensive snapshot of a crime scene, 3D laser scanning improves workflow efficiencies, from the collection of evidence at a scene to post-processing and courtroom presentations for forensic investigations. Used for crime scenes, traffic collisions, or any other event that either laws enforcement or private investigators need to document. Laser scanning provides highly accurate, systematic approach to evidence measurement and documentation.

**CRIME SCENE - DO NOT CROSS**

**CRIME SCENE - DO NOT CROSS**

**CRIME SCENE - DO NOT CROSS**



#### Topcon ES Series

Easy to use  
Bluetooth  
Reflectorless  
36 hr. battery life  
Rugged and waterproof  
Starting at \$7,500



#### Sokkia CS Series

Easy to use  
Bluetooth  
Reflectorless  
Rugged and waterproof  
Starting at \$8,500



#### Cygnus KS-102

Light Weight  
Good Entry Level System  
Reflectorless Operations  
Starting at \$4,800

## Collision Technologies

2118 Horns Point Rd.

Cambridge, MD 21613

Phone: (410) 221-6177 or

(443) 521-3852

[www.Collision-Technologies.com](http://www.Collision-Technologies.com)

[David@collision-technologies.com](mailto:David@collision-technologies.com)

*\*Prices our subject to change, contact us for updated pricing.*

CRIME SCENE - DO NOT CROSS

CRIME SCENE - DO NOT CROSS

CRIME SCENE - DO NOT CROSS

CRIME SCENE - DO NOT CROSS



TruPulse200x Mapping Laser Shown w/TruAngle

**Sokkia SX Robotic Total Station**

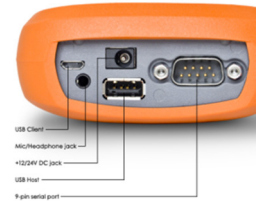
One person operation  
Bluetooth  
Reflectorless  
Package starting at \$18,500  
w/Robotic packages at \$24,500

**Topcon HiPer SR GPS**

One person operation  
Packages starting at \$20,495  
includes: software, bi-pod, Tri-  
pod, Data Collector & Software  
\*Contact us for additional  
systems configurations

**LTI TruSpeed SXb Laser Mapping System**

Includes: LTI TruSpeed SXb Speed&Mapping  
laser, Mapstar TruAngle mapping Kit, BAP  
Data Collector w/Pocketzone software, Tri-  
pod, Prism & Pole, CadZone (Crash or Crime).  
All cables, brackets and cases included.  
Starting at \$7,300.00



**Topcon Tesla or Sokkia Mesa Data Collector**

5.7" VGA color LCD (640x480) Sunlight-readable touch screen.  
Bluetooth and Serial cable connection to Total Station  
Up to 16 hrs. operations (When Configured with 2-Batteries)  
IP67 Dust/Water Protection  
-22 to 140F Operating Temperature.

Starting at \$2,955.00 (Data collection software not included)

**ARCHER 2 Data Collector**

Color Touch Screen  
Bluetooth and Serial cable connection to Total Station  
Up to 20 hours on one charge  
Optimized for performance in cold temperatures  
-22 to 104F Operating Temperature (Bluetooth -4)  
IP68 waterproof and dustproof.

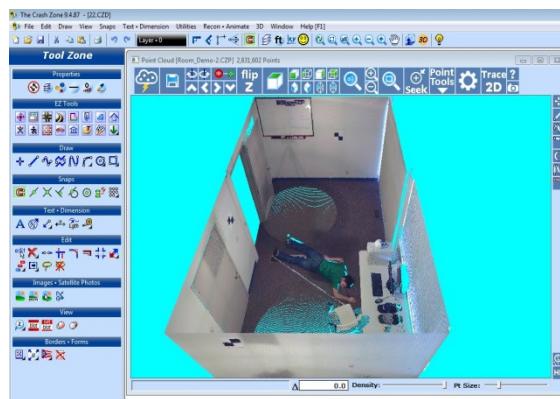
Starting at \$1,650.00 (Data collection software not included)

**Laser Speed**



**TruSpeed S / Sx / Sx+Bluetooth**

State-of-the-art technology  
Weighs less than a pound.  
Models  
(S) Measures speed: \$1,495.00  
(SX) Speed&Mapping: \$2,295.00  
(Sxb) Adds Bluetooth: \$2,395.00



**Cadzone V10 Crash/Crime 3D**

is one of the best solutions for forensic mapping & CAD needs; whether measuring a scene by tape or rolling wheel, Total Station, or GPS. Crash / Crime Zone includes all the tools you need to construct a 2D/3D crash or crime diagram. Add CadZone's **Pocketzone** data collector software to your mapping system for easy scene mapping with your Total Station or LTI system.

Have a 3D Laser Scanner, add **Cadzone's CZ Point Cloud** to Crash or Crime Zone for effective use of the point cloud data. Use CZ Point Cloud to Diagram From the Cloud!

*Crash or Crime Zone: Call for Pricing*

*PocketZone: Call for Pricing*

*CZ Point Cloud Upgrade for existing Cadzone : Call for Pricing*

**CONTACT US FOR PRICE QUOTE FOR NEW SALES, UPGRADES, AND MULTI-LICENSING**